



JAPAN AUTOMOBILE FEDERATION

日本自動車連盟

FEDERATION INTERNATIONALE DE L'AUTOMOBILE

JAF No. T-164
グループ 1
有効期日 11/19/70
F.I.A. Recognition No. [Redacted]
Group 1

5473

Form of recognition in accordance with
Appendix J to the International Sporting Code.

(国際スポーツ連盟付録Jの項及びF.I.A.の国際競技車両規則に於て規定の形式)

Manufacturer **NISSAN MOTOR Co., LTD.**

Serial No of chassis 製造機体番号 A10-000001

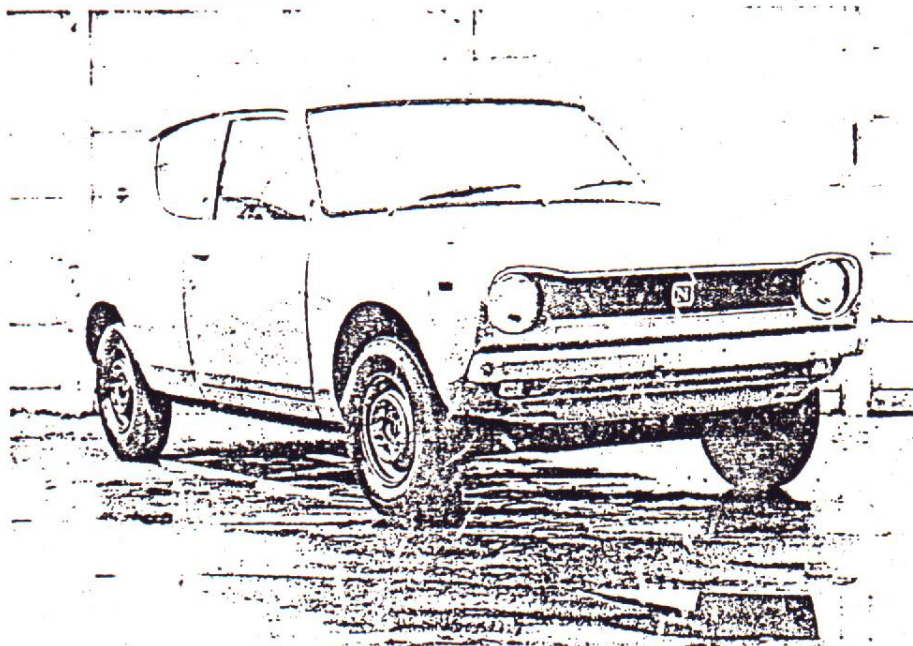
engine 製造機体エンジン番号 A10-000001

Recognition is valid from 1/10/71

Cylinder-capacity 総排気量
Recognition 988 cm³ 6029 cu.in.
Special 特別仕様
Model 型式 車種名称 E10 NISSAN CHERY
Manufacturer 製造者 NISSAN MOTOR CO., LTD.
Manufacturer 製造者 NISSAN MOTOR CO., LTD.
List 71/10

The manufacturing of the model described in this recognition form was started on *June 1970* and the minimum production of 1000 identical cars in accordance with the specifications of this form was reached on *December 1970*

Photograph A, 3/4 view of car from front 写真A, 全体写真(斜め前方)



The vehicle described in this form has been subject to the following amendments

Variants	Normal evolution of the type
on 19 rec. No. list	on 19 rec. No. list
on 19 rec. No. list	on 19 rec. No. list
on 19 rec. No. list	on 19 rec. No. list
on 19 rec. No. list	on 19 rec. No. list
on 19 rec. No. list	on 19 rec. No. list

Stamp and signature of the JAF

JAF公印及び署名

庭山博史

Hiroshi Niwayama

Stamp and signature of the F.I.A.

[Handwritten signature and stamp of the F.I.A.]

Make **NISSAN**

Model **E19**

J.A.R. 555 **T-164**

F.I.A. Reg. No. **1021**

5473

IMPORTANT - the underlined items must be stated in two measuring systems, one of which must be the metric system. See conversion table hereafter.

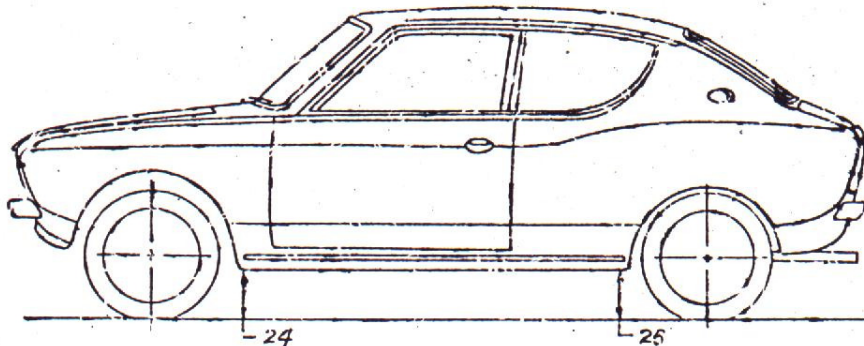
CAPACITIES AND DIMENSIONS

1. <u>Wheelbase</u>	2335	cm	91.9	inches
2. <u>Front track</u>	1270	cm	50.0	inches *
3. <u>Rear track</u>	1235	cm	48.6	inches **
4. Overall length of the car	361	cm		inches
5. Overall width of the car	147	cm		inches
6. Overall height of the car	138	cm		inches
7. Capacity of fuel tank (reserve included)			36	liters
	9.5	Gallon US		Gallon Imp.
8. Seating capacity	5			
9. Weight: total weight of the car with normal equipment, water, oil and spare wheel but without fuel nor repair tools.	590	kg	1301	lbs
				cwt

* Differences in track caused by the use of other wheels with different rim widths must be stated when recognition is requested for the wheels concerned.

Specify ground clearance in relation to the track and give drawing of two fixed points of the vehicle's structure at which measurements are taken.

These ground clearance dimensions are only for information when checking the track and can in no way affect the eligibility of the car.



Width of the car measured in the vertical plane passing through the axle of the wheels.

Front	147	cm	Rear	147	cm
-------	-----	----	------	-----	----

CONVERSION TABLE

1 inch / pouce	2.54	cm	1 quart US	0.9464	liters
1 foot / pied	30.4794	cm	1 pint (pt)	0.568	liters
1 square inch / pouce carre	6.452	cm ²	1 gallon Imp.	4.540	liters
1 cubic inch / pouce cube	16.387	cm ³	1 gallon US	3.785	liters
1 pound / livre (lb)	453.593	gr.	1 hundred weight (cwt)	50.002	kg

5473

Make **NISSAN**

Model **E10**

CHASSIS AND COACHWORK (Photographs A, B and C)

- 20. Chassis/body construction : ~~separate~~ / unitary construction
- 21. Unitary construction, material (s) **Steel**
- 22. Separate constructions: material(s) of chassis
- 23. Material (s) of coachwork
- 24. Number of doors **2** Material (s) **Steel**
- 25. Material (s) of bonnet **Steel**
- 26. Material (s) of boot lid **Steel**
- 27. Material (s) of rear-window **Glass**
- 28. Material (s) of windscreen **Glass**
- 29. Material (s) of front-door windows **Glass**
- 30. Material (s) of rear-door windows
- 31. Sliding system of door windows **Vertical manual**
- 32. Material (s) of rear-quarter light **Glass**

ACCESSORIES AND UPHOLSTERY

- 38. Interior heating : ~~yes~~ - no
- 39. Air-conditioning : ~~yes~~ - no
- 40. Ventilation : yes - no
- 41. Front seats, type of seats and upholstery **Separate vinyl**
- 42. Weight of front seat (s), complete with supports and rails, out of the car :
9 kg x 2 lbs
- 43. Rear seats, type of seats and upholstery **Bench vinyl**
- 44. Front bumper, material (s) **Steel** Weight **2.0 kg** lbs
- 45. Rear bumper, material (s) **Steel** Weight **2.0 kg** lbs

WHEELS

- 50. Type **Pressed steel**
- 51. Weight (per wheel, without tyre) **4.5 kg** lbs
- 52. Method of attachment **4 nuts**
- 53. Rim diameter **505 mm** **12** inches
- 54. Rim width **102 mm** **4** inches

STEERING

- 60. Type **Rack and pinion**
- 61. Servo-assistance : ~~yes~~ - no
- 62. Number of turns of steering wheel from lock to lock **3.2**
- 63. In case of servo-assistance:

Make **NISSAN**

Model **E10**

J.A.F. 259

T-164
5473

F.I. A. Rec. No.

SUSPENSION

- 70. Front suspension (photo. D), type **Mc Pherson**
- 71. Type of spring **Coil**
- 72. Stabiliser (if fitted)
- 73. Number of shock absorbers **2** 74. Type **Hydraulic telescopic**
- 78. Rear suspension (photo. E), type **Trailing arm**
- 79. Type of spring **Coil**
- 80. Stabiliser (if fitted)
- 81. Number of shock absorbers **2** 82. Type **Hydraulic telescopic**

BRAKES (photographs F and G)

- 90. System **Hydraulic**
- 91. Servo-assistance (if fitted), type
- 92. Number of hydraulic master cylinders **1**

	FRONT			REAR		
93. Number of cylinders per wheel	2			1		
94. Bore of wheel cylinder (s)	222	mm	in. 17.4		mm	in.
Drum Brakes						
95. Inside diameter	203	mm	in. 180		mm	in.
96. Length of brake linings	195	mm	in. 173		mm	in.
97. Width of brake linings	35	mm	in. 3.2		mm	in.
98. Number of shoes per brake	2		2			
99. Total area per brake	13,650	mm ²	sq. in. 10,380		cm ²	sq. in.
Misc brakes						
100. Outside diameter		mm	in.		mm	in.
101. Thickness of disc		mm	in.		mm	in.
102. Length of brake linings		mm	in.		mm	in.
103. Width of brake linings		mm	in.		mm	in.
104. Number of pads per brake						
105. Total area per brake		mm ²	sq. in.		cm ²	sq. in.

Make **NISSAN**

Model **B10**

JAN-PERFORM **T-114**

F.I.I. Reg. No. **5473**

5473

ENGINE (photographs I and K) **

130. Cycle **4** 131. Number of cylinders **4**

132. Cylinder arrangement **In-line**

133. Bore **73** mm **2.87** in. 134. Stroke **59** mm **2.32** in.

135. Capacity per cylinder **247** cm³ **15.07** cu. in.

136. Total cylinder capacity **988** cm³ **60.29** cu. in.

137. Material (s) of cylinder block **Cast iron**

138. Material (s) of sleeves (if fitted)

139. Cylinder-head, material (s) **Aluminum alloy** Number Filled **1**

140. Number of inlet ports **4** 141. Number of exhaust ports **4**

142. Compression ratio **9.0**

143. Volume of one combustion chamber **254** cm³ **cu. in.**

144. Piston, material **Aluminum alloy** 145. Number of rings **3**

146. Distance from gudgeon pin centre line to highest point of piston crown **33** mm **inches**

147. Crankshaft: **rounded / stamped** 148. Type of crankshaft: **integral / XXXX**

149. Number of crankshaft main bearings **3**

150. Material of bearing cap **Cast iron**

151. System of lubrication: **XXXXXXXX / oil in sump**

152. Capacity, lubricant **3.3** ltrs **pts** **quarts US**

153. Oil cooler: **XXXXX** no **XXXXX** yes

154. Method of engine cooling **Water** **quarts US**

155. Capacity of cooling system **4.1** ltrs **pints**

156. Cooling fan (if fitted), dia. **290** mm **inches**

157. Number of blades of cooling fan **6**

Bearings **

158. Crankshaft main, type **Plain** Dia. **50** mm **in.**

159. Connecting rod big end, type **Plain** Dia. **45** mm **in.**

Weights **

160. Flywheel (clean) **4.5** kg **lbs**

161. Flywheel with clutch (all turning parts) **10.7** kg **lbs**

162. Crankshaft **9.8** kg **lbs**

163. Connecting rod **0.41** kg **lbs**

164. Piston with rings and pin **0.34** kg **lbs**

** for additional information concerning Wankel rotary engines see page 15, 16

FOUR STROKE ENGINES * * *

- 170. Number of cylinders 4
- 171. Location of cylinders Cylinder block
- 172. Type of combustion drive Chain
- 173. Type of valve operation Push rod
- INLET (see page 81 * * *)
- 180. Material of inlet manifold Aluminium alloy
- 181. Diameter of valves 35 mm 1.38 inches
- 182. Max. valve lift 8 mm 0.31 in.
- 183. Number of valve springs 1
- 184. Type of spring Coil
- 185. Number of valves per cylinder 1
- 186. Tappet clearance for checking timing (cold) 0.35 mm inches
- 187. Valves open at (with tolerance for tappet clearance indicated) B, T, D, C $12^{\circ} \pm 7^{\circ}$
- 188. Valves close at (with tolerance for tappet clearance indicated) A, F, D, C $48^{\circ} \pm 7^{\circ}$
- 189. Air filter, type Dry

EXHAUST (see page 81 * * *)

- 195. Material of exhaust manifold Cast iron
- 196. Diameter of valves 29 mm 1.14 inches
- 197. Max. valve lift 8 mm 0.31 in.
- 198. Number of valve springs 1
- 199. Type of spring Coil
- 200. Number of valves per cylinder 1
- 201. Tappet clearance for checking timing (cold) 0.35 mm inches
- 202. Valves open at (with tolerance for tappet clearance indicated) B, B, D, C $50^{\circ} \pm 7^{\circ}$
- 203. Valves close at (with tolerance for tappet clearance indicated) A, T, D, C $10^{\circ} \pm 7^{\circ}$

CARBURETION (photograph N1)

- 210. Number of carburetors fitted 1
- 211. Type Down - draft
- 212. Make HIFACH
- 213. Model DCG - 286 - 4
- 214. Number of mixture passages per carburetor 2
- 215. Flange hole diameter of exit port of carburetor 26 & 28 mm
- 216. Minimum dimensions of mixture passages (mm) ~~XXXXXXXXXXXXXXXXXXXX~~
20 & 24 inches

INJECTION (see page 14)

- 220. Make of pump
- 221. Number of plungers
- 222. Model or type of pump
- 223. Total number of injectors
- 224. Location of injectors
- 225. Minimum diameter of inlet pipe mm inches

* * for additional information concerning two-stroke engine and super-charged engines see page 14.

* * * for additional information concerning Wankel rotary engines see page 15, 16.

Make: NISSAN

Model: 210

T-169

C.I.A. Rec. 1 p.

5473

ENGINE ACCESSORIES

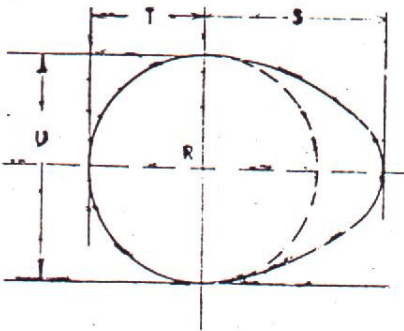
- 230. Fuel pump : mechanical and ~~or~~ electric
- 232. Type of ignition system *Make and break*
- 234. No. of ignition coils: 1
- 236. Generator, type: ~~dyno~~/alternator-number fitted: 1
- 238. Voltage of generator: 12 volts
- 240. Location: *Engine room*
- 244. Voltage of battery: 12 volts

- 231. No. fitted: 1
- 233. No. of distributors: 1
- 235. No. of spark plugs per cylinder/~~box~~: 1
- 237. Method of drive: *V-Belt*
- 239. Battery, number: 1

ENGINE AND CAR PERFORMANCES (as declared by manufacturer in catalogue)

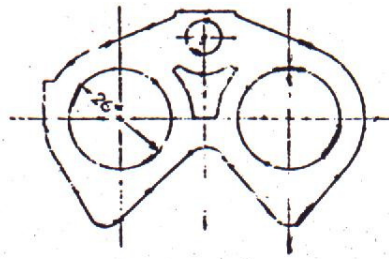
- 250. Max. engine output: 58 Ps (type of horsepower: *JIS*) at 6000 rpm
- 251. Maximum rpm: 6200 rpm output at that figure: 57.8 Ps
- 252. Maximum torque: 8.0 Kg - m at 4000 rpm
- 253. Maximum speed of the car: 140 km/hour miles/hour

255. Cam profile

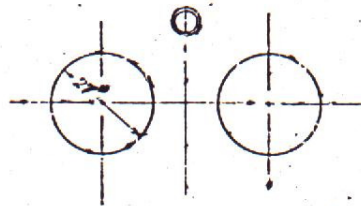


Inlet cam			
S =	20.9	mm	0.82 inches
T =	15.6	mm	0.61 inches
U =	31.2	mm	1.23 inches
Exhaust cam			
S =	20.9	mm	0.82 inches
T =	15.6	mm	0.61 inches
U =	31.2	mm	1.23 inches

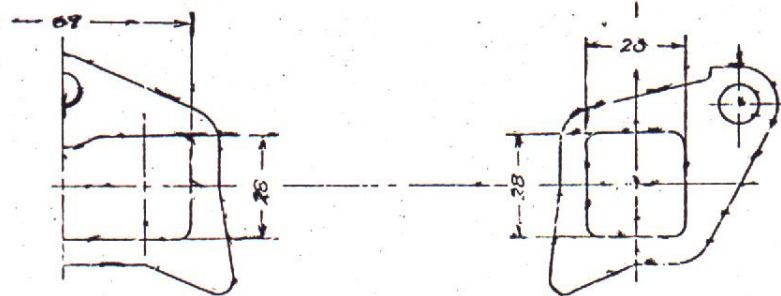
Drawing inlet manifold ports, side of cylinder head/housing scale or dimensions and manufacturing tolerance.



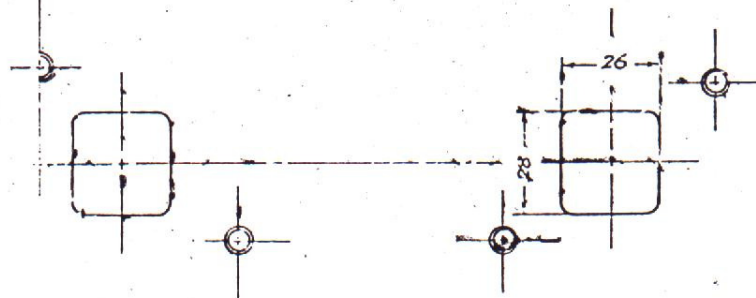
Drawing of entrance to inlet part of cylinder head/housing scale or dimensions and manufacturing tolerance.



Drawing exhaust manifold ports, side of cylinder head/housing scale or dimensions and manufacturing tolerance.



Drawing of exit to exhaust part of cylinder head/housing. Indicate scale or dimensions and manufacturing tolerance.



Unit: mm
Tolerance: ±0.5

make **NISSAN**

Model **E10**

J.A.S.D. 7-114

F.I.A. Rec. No. **5673**

DRIVE TRAIN

CLUTCH

- 260. Type of clutch *Dry Plate*
- 262. Dia. of clutch plate 165 mm
- 263. Dia. of linings inside 110 mm
- 264. Method of operating clutch *Mechanical*

261. No. of plates 1

outside 160 mm in.

GEAR BOX (photograph H)

- 270. Manual type, make *NISSAN*
- 271. No. of gear-box ratios forward 4
- 273. Location of gear-shift *Floor*
- 274. Automatic, make
- 275. No. of forward ratios

Method of operation *Mechanical*

272. Synchronized forward ratios 1 2 3 & 4

type
276. location of gear-shift

277.	Manual		Automatic		Alternative manual			
	Ratio	No. teeth	Ratio	No. teeth	Ratio	No. teeth	Ratio	No. teeth
1	3.67	$\frac{34}{18} \times \frac{35}{18}$			3.01	$\frac{31}{20} \times \frac{35}{18}$		
2	2.22	$\frac{34}{18} \times \frac{27}{23}$			1.97	$\frac{31}{20} \times \frac{28}{22}$		
3	1.45	$\frac{34}{18} \times \frac{23}{28}$			1.38	$\frac{31}{20} \times \frac{25}{28}$		
4	1.00				1.00			
5								
6								
reverse	4.09	$\frac{24}{18} \times \frac{16}{18} \times \frac{30}{16}$			3.36	$\frac{31}{20} \times \frac{16}{18} \times \frac{32}{16}$		

- 278. Overdrive, type
- 279. Forward gears on which overdrive can be selected
- 280. Overdrive ratio

FINAL DRIVE

- 290. Type of final drive *Helical gear*
- 291. Type of differential *Bevel gear*
- 292. Type of limited slip differential (if fitted)
- 293. Final drive ratio 4.29 4.43
- Number of teeth 60/14 62/14

Make **NISSAN**

Model **1710**

J.A.F. 2889 T-169

F.I. v. R. e. P. o.



5473

Optional equipment affecting preceding information. This to be stated together with reference number.

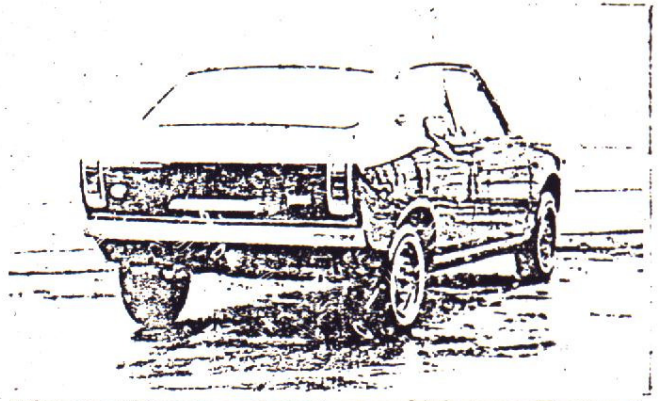
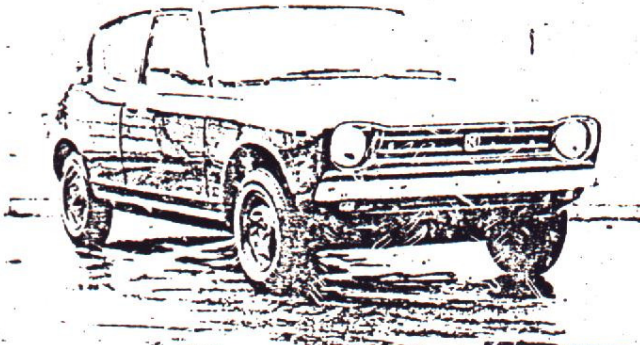
The following items have been added

VALID FOR GROUP 2 ONLY

510 Deluxe = 670kg

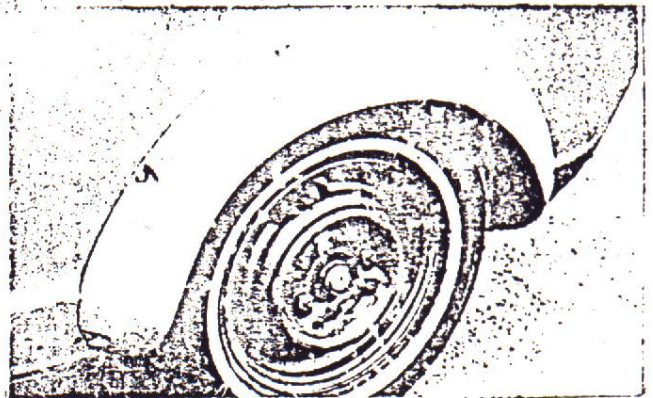
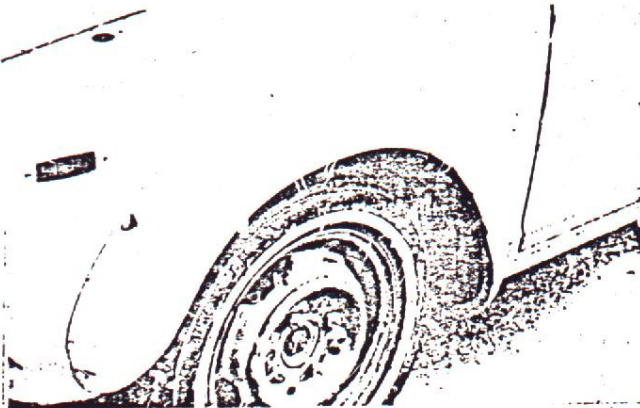
Photograph A 3/4 View, front

Photograph B 3/4 View rear



Optional equipment
Photograph over fender front

Photograph over fender rear

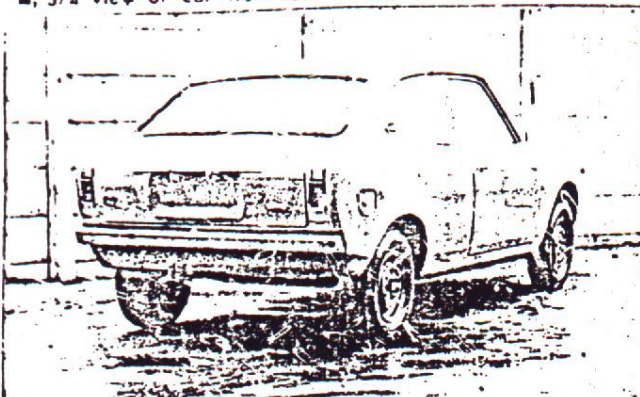


Parts No. R/H 63860-40820
L/H 63861-40820

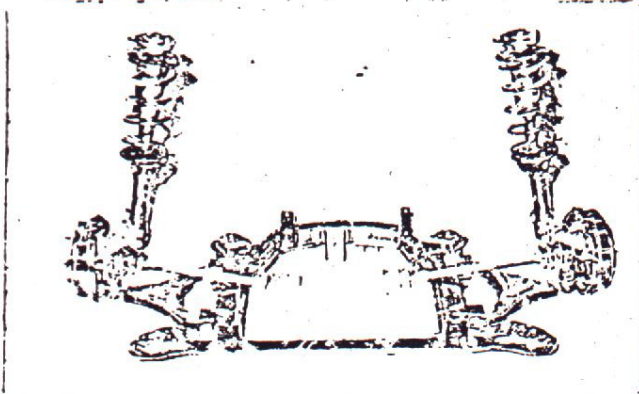
R/H 63862-40820
L/H 63863-40820

Photograph

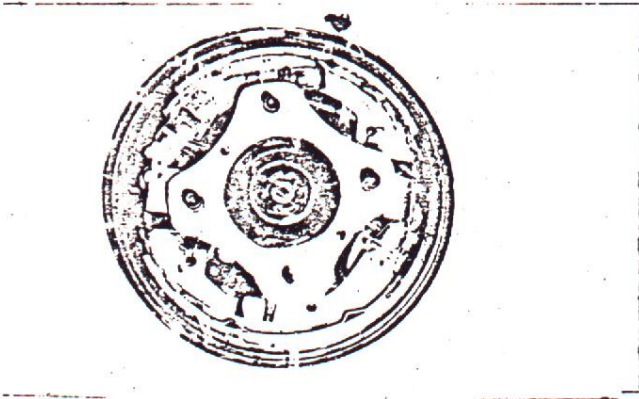
B, 3/4 view of car from rear



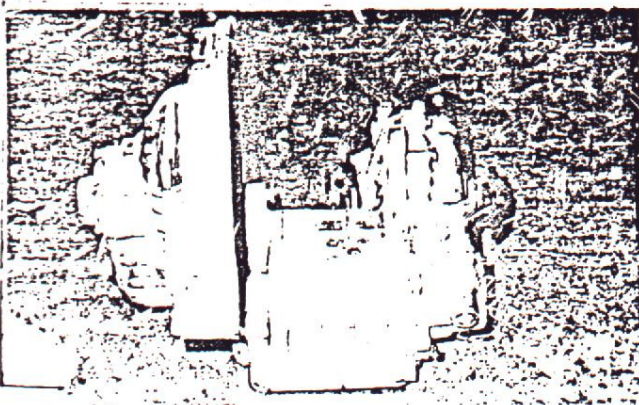
D, Front axle complete, removed from car. Without wheels.
フロントサスペンション



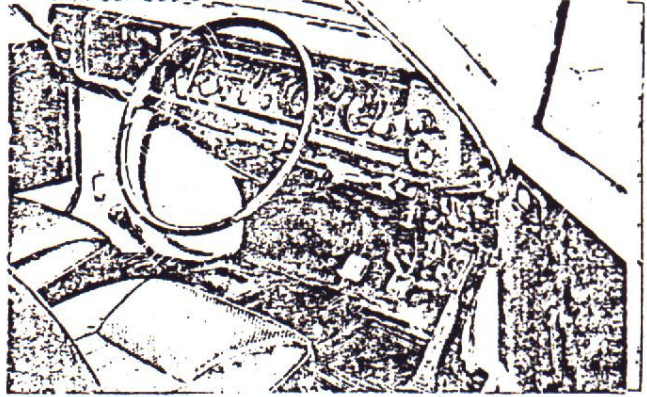
F, Front brake, drum removed or disc with caliper(s)
フロントブレーキ



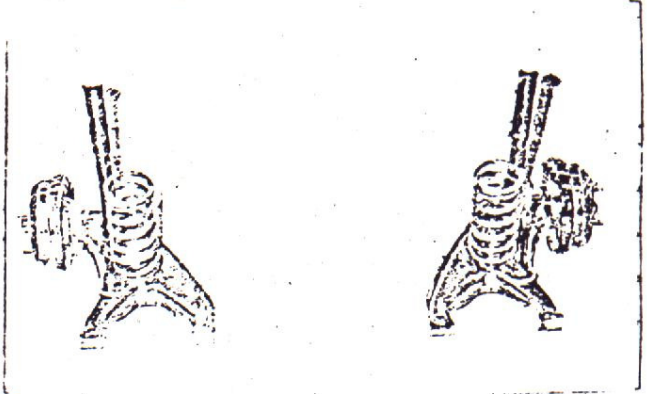
H, Gear-box, view from side



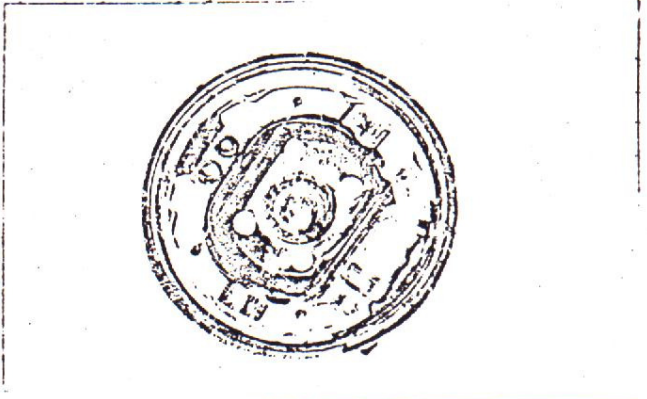
C, Interior view of car through driver's door topen or removed with dashboard
運転席側内装



E, Rear axl: complete without wheels, removed from car.
リアサスペンション



G, Rear brake, drum removed or disc with caliper(s)
リアブレーキ

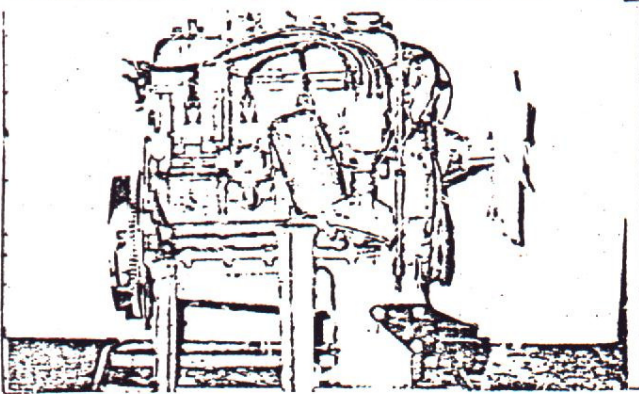


I, Silencer + exhaust pipes after exhaust manifold

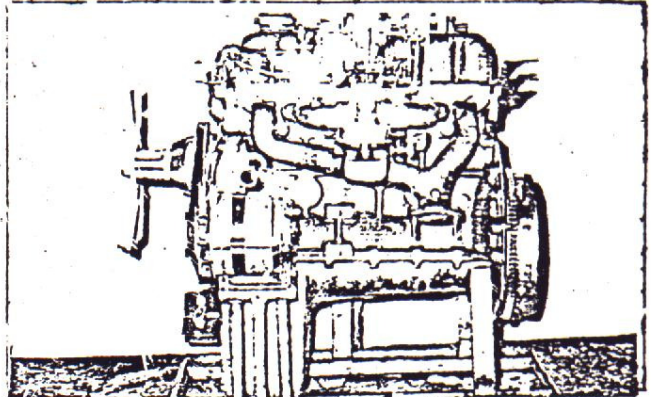


Photograph

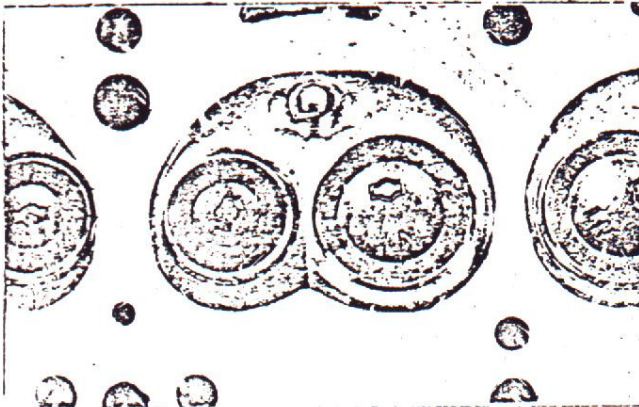
Engine unit out of car, from right. With clutch and accessories but without air filter nor gear-box.



Engine unit out of car, from left. With clutch and accessories but without gear-box nor air filter.



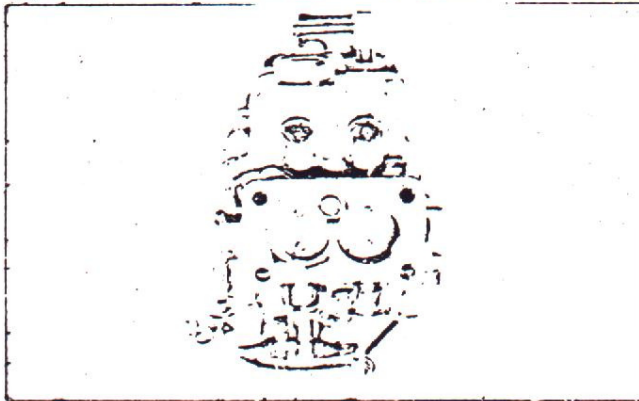
L. Combustion chamber



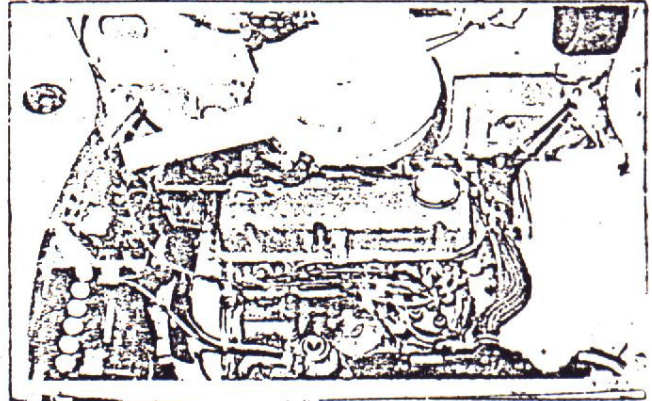
M. Piston crown



N. Carburetor (view from side of manifold)



O. Engine in car with all accessories, bonnet open or removed.



P. Inlet manifold



Q. Exhaust manifold



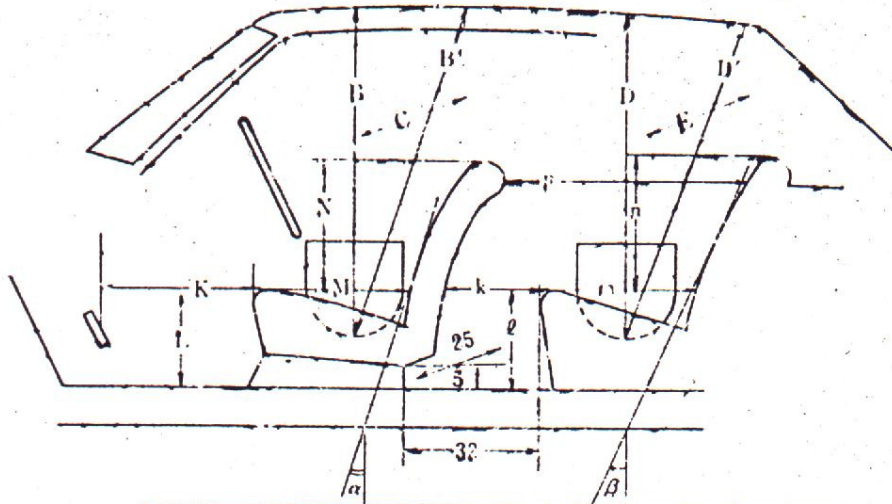
Make NISSAN

Model E10

J.A.R. No. T-166
 E.J.A.R. c. No. ~~5473~~
 5473

DIMENSIONS OF INTERIOR
 (Conform to Art. 253 b of Appendix J)

For four seaters:
 4座車

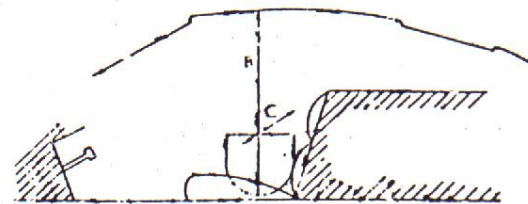


Minimum Dimensions (cm)							
B	B'	α	C	D	D'	β	E
92	100	225°	126	925	945	225°	125

Minimum Dimensions (cm)										
I	ℓ	M	m	N	n	k + m	p	k	k + ℓ + m	K + I + M
31.0	30.5	44.5	44.0	43.5	36	64.5	72.5	20.5	95.0	120.5
0.9I	2b	0.85M	38.0	0.8N	35.0	0.8(k + m)	52.0	(15)	(95)	(120)

For two seaters:
 2座車

Minimum Dimensions	
B	C
cm	CT





JAPAN AUTOMOBILE FEDERATION
 社団法人 日本自動車連盟

T-164E-1

J.A.F. 登録番号
 登録年月日

47. 4. 30

F.I.A. Hompl. No. ~~5473~~

5473 1/IV

FEDERATION INTERNATIONALE DE L'AUTOMOBILE

Form of recognition accordance with
 Appendix J to the International Sporting Code.

国際スポーツ法典付則J項及びFIA国内競技車両規則に基いた公認書式

Make	NISSAN MOTOR CO., LTD.	Model	E10 (NISSAN CHERRY)
製造会社名		型式及び通称名	
Modification's application starts with serial No.		chassis No.	E10-000001
		説明シャーシ番号	
		engine No.	A10-000001
		説明エンジン番号	
Application of this amendment started the	JAN. 1970		
適用年月日			
Commercial denomination after application of modifications			
The modifications are to be considered as	Variants / normal evolution of the type		
	止業進化		
Date amendment is valid from		List	

Description of amendment F10:

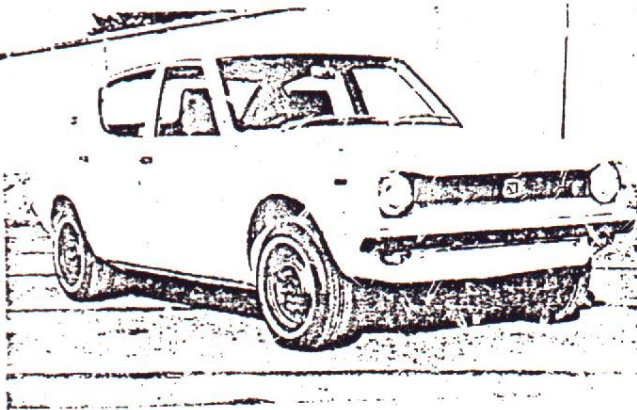
Changing group of FIA homologation.

Group 2 → Group 1

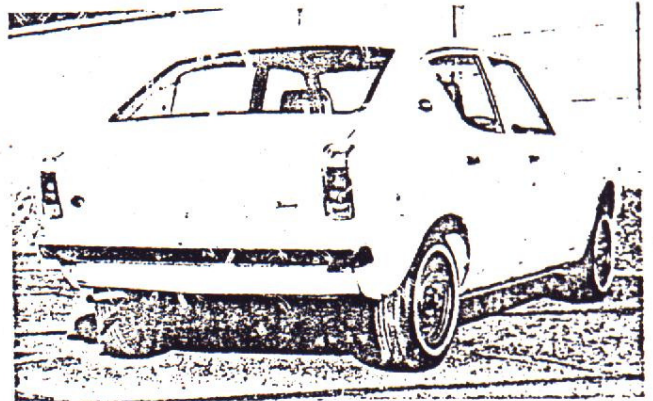
The following items have been added.

4 door model

Photograph A.3/4 view, front



Photograph B.3/4 view, rear



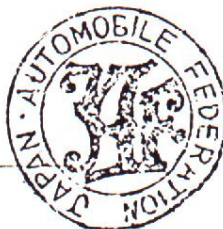
9. Weight (4 door model)

605 kg, 1,336 lb

Stamp and signature of the JAF

JAF 公認印及び署名

三井平八郎
 Heihachiro Mitsui



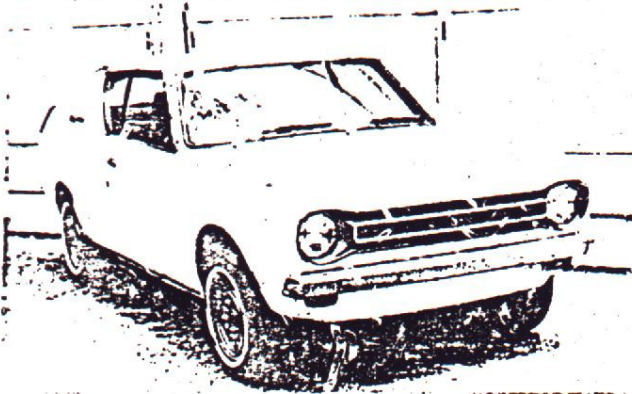
Stamp and signature of the F.I.A.

[Handwritten signature]

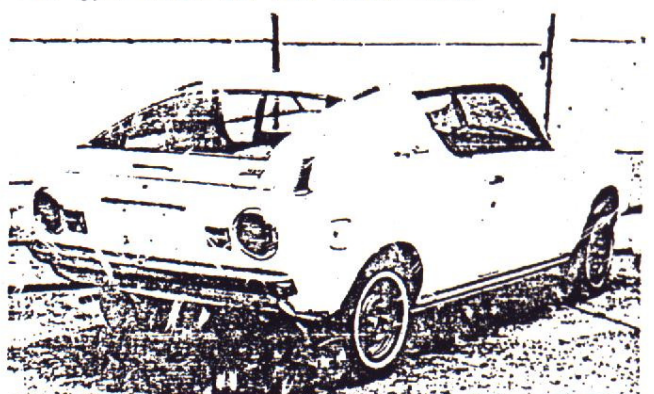
COUPE MODEL (KE10)

Photograph

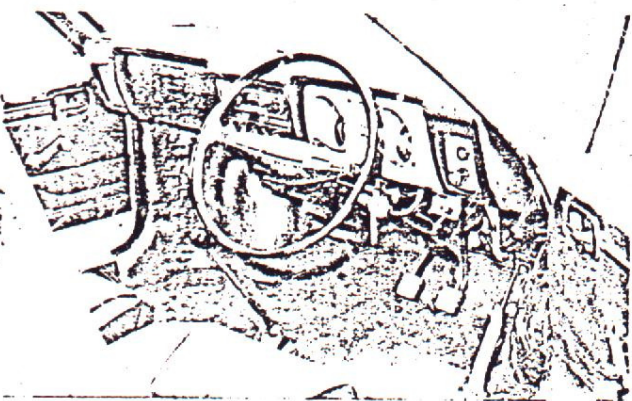
A. 3/4 view of car from front



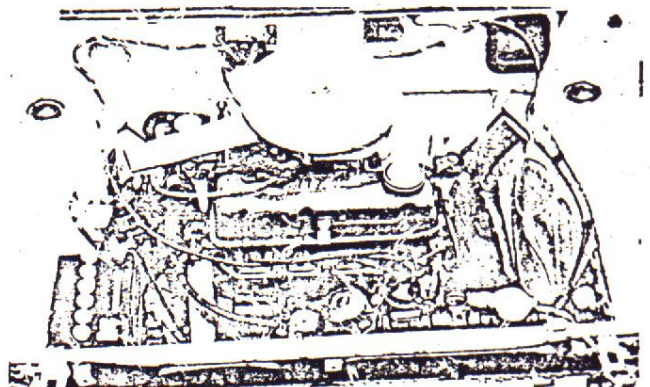
B. 3/4 view of car from rear



C. Interior view



D. Engine in car with all accessories, bonnet opened or removed



CAPACITIES AND DIMENSIONS

- | | |
|------------------------------|----------|
| 4. Overall length of the car | 369.0 cm |
| 5. Overall width of the car | 149.0 cm |
| 6. Overall height of the car | 131.5 cm |
| 9. <u>Weight</u> 645 Kg | 1423 lbs |

Width of the car measured in the vertical plane passing through the axle of the wheels.

Front	149.0 cm
-------	----------

ACCESSORIES AND UPHOLSTERY

- | | |
|----------------------|-----|
| 38. Interior heating | yes |
|----------------------|-----|





JAPAN AUTOMOBILE FEDERATION

社団法人 日本自動車連盟

F.A.F. 登録番号 T-1511-3

発効年月日 17.10.31

F.I.A. Homol. No. 5473

2/2V

FEDERATION INTERNATIONALE DE L'AUTOMOBILE

Form of recognition accordance with Appendix J to the International Sporting Code.

国際スポーツ法典付録J項及びJ.A.F.国内競技車両規則に従った公認書式

Make NISSAN MOTOR CO., LTD. Model E10 (NISSAN CHEPRY)
 製造会社名 型式及び通称名
 Modification's application starts with serial No. chassis 適用シャーシー番号 KE10-000C01
 engine 適用エンジン番号 A10-CC0001
 Application of this amendment started the 1st DEC. 1971
 適用年月日
 Commercial denomination after application of modifications KE10
 The modifications are to be considered as: Variant / no. of variants about the type
 変型 / 変型数
 Date amendment is valid from

Description of amendment 内容

The following items have been added.

WHEELS

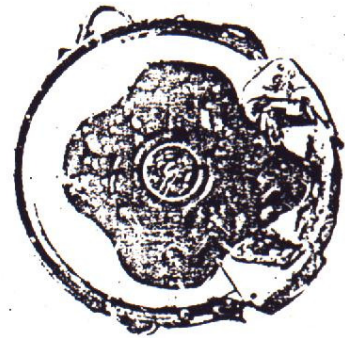
- 51. Weight (per wheel, without tyre) 5.1 Kg
- 54. Rim width 114 mm 4 1/2 inches

BRAKES

- Disc brake Front
- 99. Inside wheel cylinder 47.6 mm
- 100. Outside diameter, 200 mm
- 101. Thickness of disc, 10 mm
- 102. Length of brake linings, 109 mm
- 103. Width of brake linings, 37 mm
- 104. Number of pads per brake, 2
- 105. Total area per brake, 6400 mm²

Photograph F.

Front brake drum removed or disc with caliper(s).



Stamp and signature of the JAF

JAF 印字欄

三井 平八郎

Heihachiro Mitsui



Stamp and signature of the F.I.A.

Signature of the F.I.A.



JAPAN AUTOMOBILE FEDERATION

社団法人 日本自動車連盟

J.A.F. 登録番号 F.I.A. E-2
発給年月日 47.10.31
F.I.A. Homol. No 5473

3/1E

FEDERATION INTERNATIONALE DE L'AUTOMOBILE

Form of recognition accordance with
Appendix J to the International Sporting Code.

国際自動車連盟規則J項及びF.I.A.国際競技車規則J項に適合する式。

Make	NISSAN MOTOR CO., LTD.	Model	E10 (NISSAN CHERRY)
製造会社名		型式及登録名称	
Modification's application starts with serial No.		chassis No.	E10-063001
		engine No.	A10

Application of this amendment started the Nov. 1971

適用年月日

The modifications are to be considered as: ~~Variant~~ / normal evolution of the type

Date amendment is valid from

List

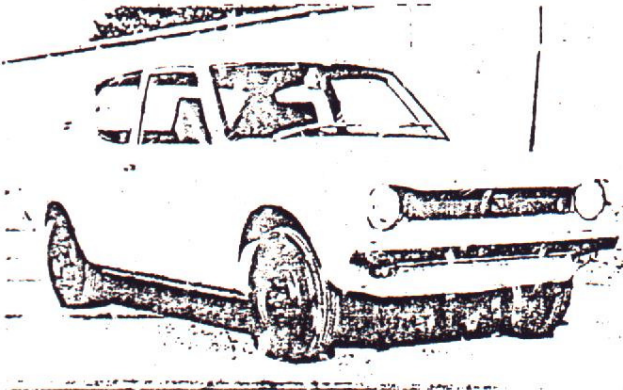
Description of amendment

The following items have added.

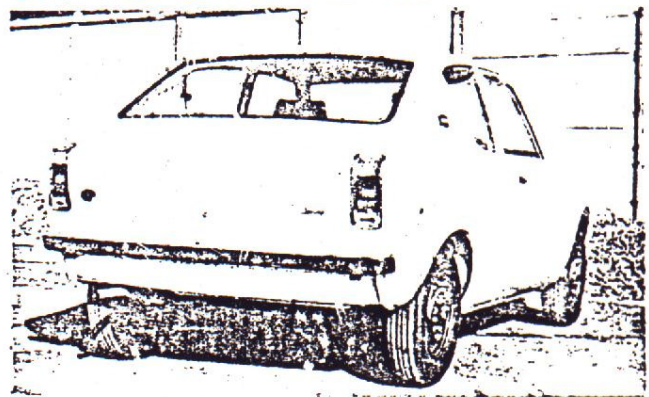
Photograph

2 Door Model

A. 3/4 view of car from front



B. 3/4 view of car from rear

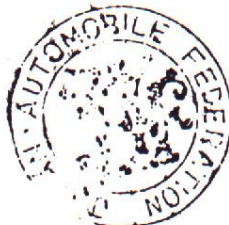


Stamp and signature of the JAF

JAF 登録印

三井平八郎

Waihachiro Mitsui



Stamp and signature of the F.I.A.

Make NISSAN

Model E10

F.I.A. Rec. No.

T-164W-3
5473

42. Weight of front seat(s), complete with supports and rails, out of the car

12 Kg x 2

1bs

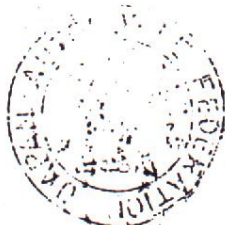
ENGINE

156. Cooling fan dia

190 mm

157. Number of blades of cooling fan

5





JAPAN AUTOMOBILE FEDERATION

日本自動車連盟
法人

J.A.F. FILE NO.

T-164E-5

1973年12月31日

F.I.A. Memoi. No 5473

4/2E

FEDERATION INTERNATIONALE DE L'AUTOMOBILE

Form of recognition accordance with
Appendix J to the International Sporting Code.

国際スポーツ法典附則J項及びJ.A.F.国内競技車両規則に従った公認書式。

Make 製造会社名	NISSAN MOTOR CO., LTD.	Model 型式及び通称名	E10	NISSAN GERRY
Modification's application starts with serial 変更申請開始日	No.	chassis 通称シャシー型式番号	E10-000001	
Application of this amendment started the 変更申請日	SEP. 1973	engine 通称エンジン型式番号	A10-000001	
Commercial denomination after application of modifications				
The modifications are to be considered as:	XXXXXX / normal evolution of the type 変更 / 正常進化			
Date amendment is valid from	1.4.74			

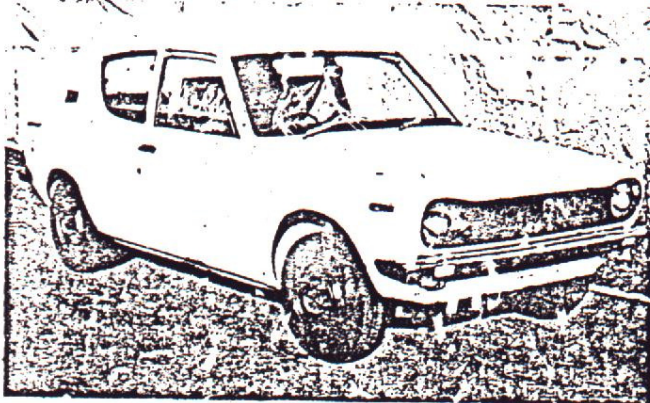
Description of amendment

The following items have been added for group 1

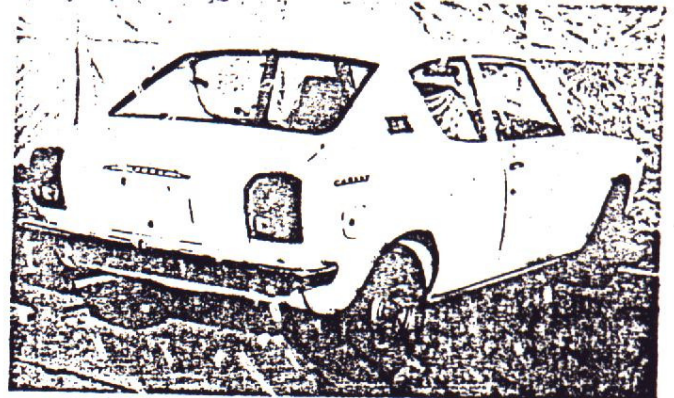
2DOOR SEDAN MODEL

Photograph

A, 3/4 view of car from front



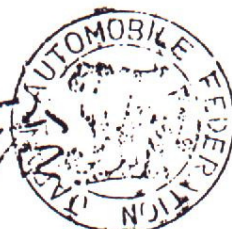
B, 3/4 view of car from rear



Stamp and signature of the JAF

JAF 代表者

Yasuharu Naha

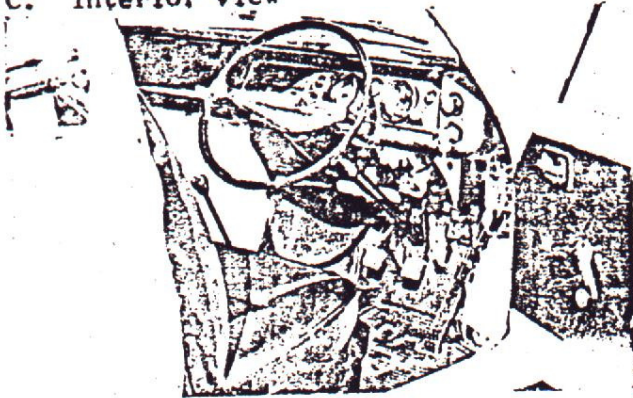


Stamp and signature of the F.I.A.

[Signature]

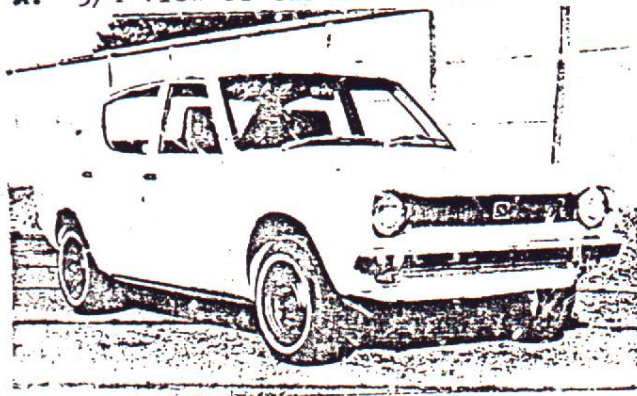
3/1E

C. Interior view

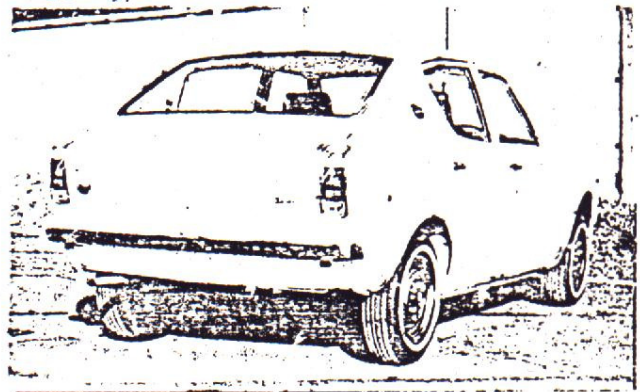


4 Door Model

A. 3/4 view of car from front



B. 3/4 view of car from rear



5. Overall width of the car

149.0 cm

Width of the car measured in the vertical plane passing through the axle of the wheels

Front

149.0 cm

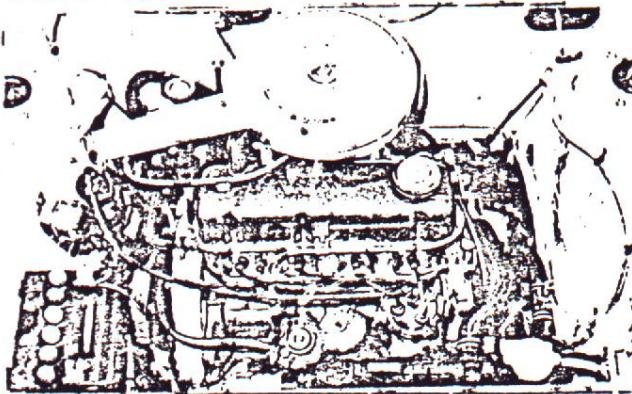
156. Cooling fan dia

190 mm

157. Number of blades of cooling fan

5

0. Engine in car with all accessories, bonnet opened or removed.





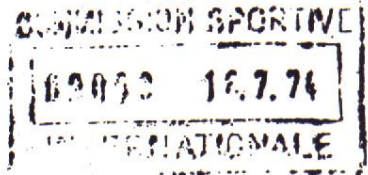
JAPAN AUTOMOBILE FEDERATION

社団法人 日本自動車連盟

1-A-F-269 T-164E-6
2500 H.E. 1974年 4月30日

F.I.A. Homol. No 5473 5/3E

FEDERATION INTERNATIONALE DE L'AUTOMOBILE



Form of recognition accordance with Appendix J to the International Sporting Code.

国際自動車連盟の承認状 (International Automobile Federation's Certificate of Approval)

Make NISSAN MOTOR CO. LTD. Model E10 NISSAN CHERRY
 Modification's evolution starts with serial No. chassis E10-000001
 Application of this amendment started the engine A10 DEC. 1973
 Commercial denomination after application of modifications KE10
 The modifications are to be considered as: ~~exception~~ normal evolution of the type
 Date amendment is valid from 1.8.74

Description of amendment

The following items have been added for group 1.

WHEELS

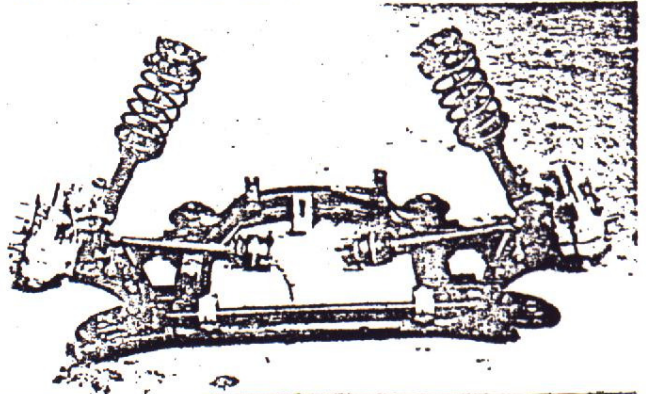
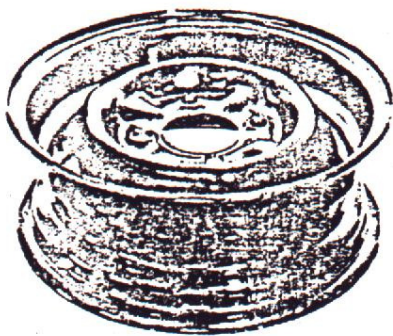
- 50. Type Pressed steel
- 51. Weight(per wheel, without tyre) 6.9 kg
- 52. Method of attachment 4 Nuts
- 53. Rim diameter 330 mm 13 inches
- 54. Rim width 114 mm 4.5 inches

SUSPENSION

- 72. Stabilizer Torsion bar

Photograph

- Road wheel. D. Front axle complete.



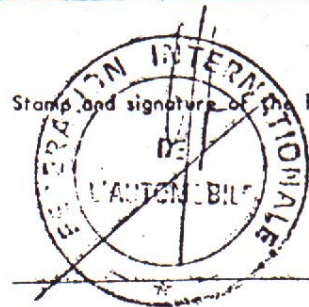
Stamp and signature of the JAF

JAF SIGNATURE

難波靖治
Yasuharu Nanba



Stamp and signature of the F.I.A.

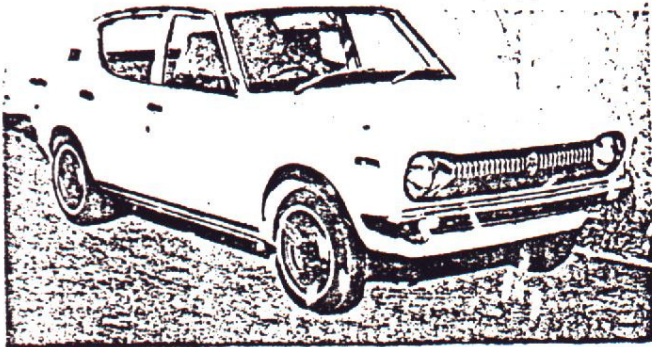


h/2c

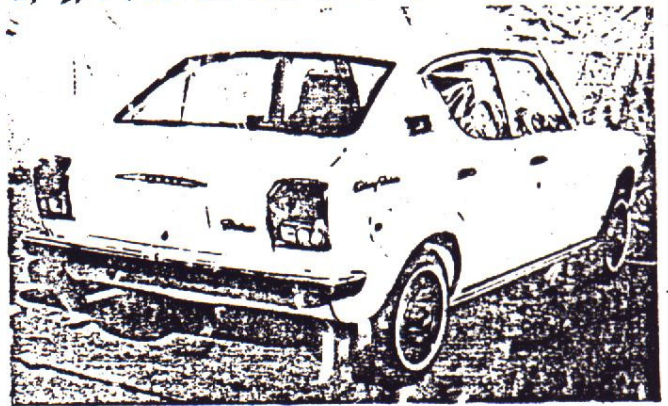
4DOOR SEDAN MODEL

Photograph

A, 3/4 view of car from front



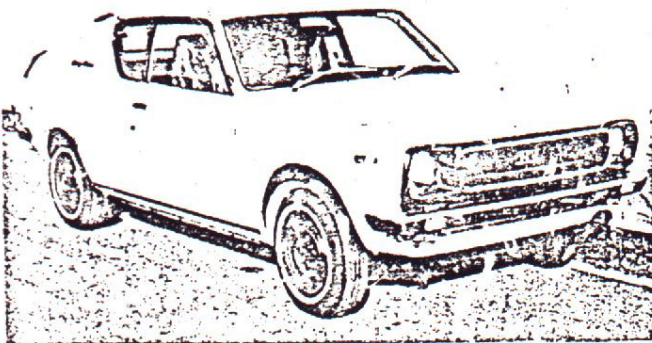
B, 3/4 view of car from rear



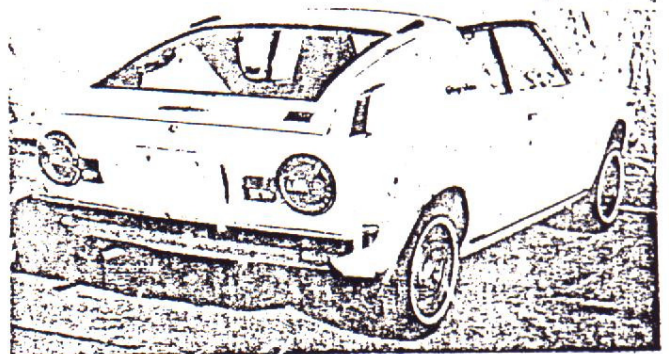
2DOOR COUPE MODEL

Photograph

A, 3/4 view of car from front



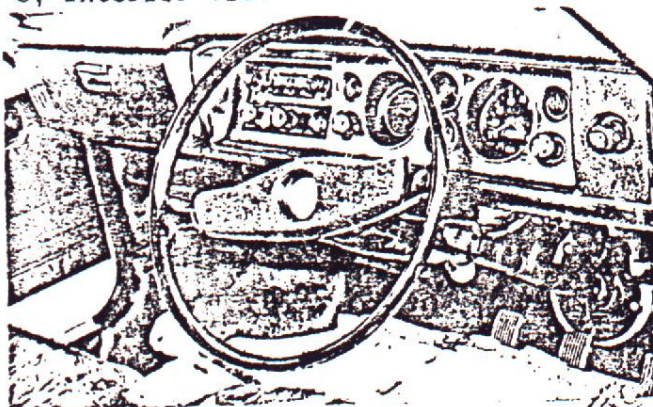
B, 3/4 view of car from rear



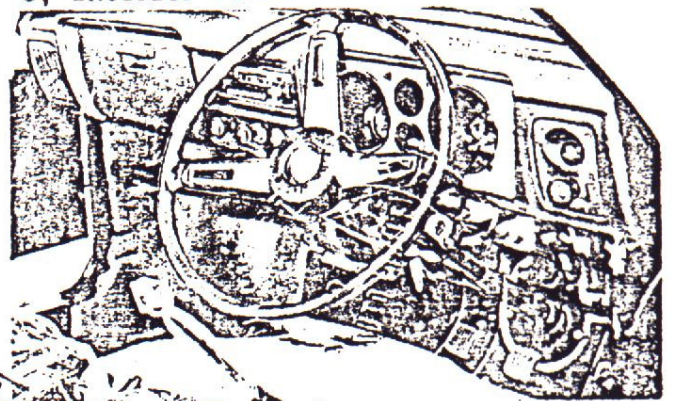
INSTRUMENT

Photograph

C, Interior view



C, Interior view





JAPAN AUTOMOBILE FEDERATION

社団法人 日本自動車連盟

J.A.F. Homol. No. T-164E-7
2091111 1975年6月30日
F.I.A. Homol. No. 5473

6/4E

FEDERATION INTERNATIONALE DE L'AUTOMOBILE

Form of recognition accordance with
Appendix J to the International Sporting Code.

国際自動車連盟規約第10条第1項に基き、本連盟の承認を受けた型式

Make	NISSAN MOTOR CO., LTD.	Model	E10	NISSAN CHERRY
製造社名		型式及び通称名		
Modification's application starts with serial	No.	chassis No.	E10-063001	
		engine No.	A10	
Application of this amendment started the	NOV, 1971			
適用開始				
Commercial denomination after application of modifications	E10, KE10.			
The modifications are to be considered as:	NON-NORMAL normal evolution of the type			
	非常進化 正常進化			
Date amendment is valid from	1 10 75	list		

Description of amendment 147r

CORRECTION

F.I.A. Homol. No. 5473/3/1E Page 2

157. Number of blades of cooling fan

5 → 6

Stamp and signature of the JAF

J.A.F. HOMOL. NO.

難波靖彦

Yasuharu Nanba

